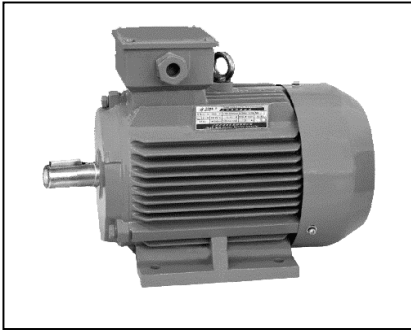


Electromotor – High Output (Progressive) Motors



High output design motors from Electromotor. These motors are of Cast Iron construction and have a higher output for the frame size than the IEC standard.

Below are listed our most common types if the motor you require is not listed please contact our sales office for further information.

2-pole (3000 rpm)

TYPE	Rated Output		Full Load				Locked Current	Locked Torque	Max. Torque	Moment of Inertia $J = \frac{1}{4}GD^2$ kgm ²	Weight kg
	kW	Hp	Current in 400V A	Speed r/min	Eff %	Power Factor cos φ	Rated Current Ist/In	Rated Torque T _{st} /T _N	Rated Torque T _{max} /T _N		
TM 180 M2P	30	40	51.14	2952	90	0.90	2.3		8.1		189
TM 200 M2P	45	60	Technical data on application								
TM 250 M2P	75	100	126.14	2968	93	0.89	2.3		7.4		387
TM 280 M2P	110	150	181.30	2973	94	0.91	2.3		7.8		593

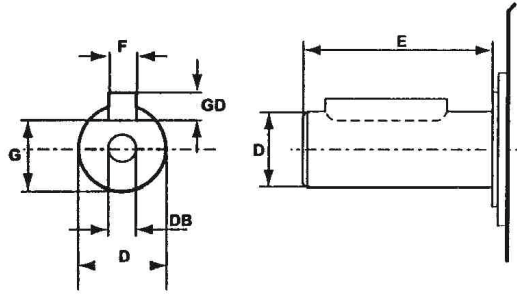
4-pole (1500 rpm)

TYPE	Rated Output		Full Load				Locked Current	Locked Torque	Max. Torque	Moment of Inertia $J = \frac{1}{4}GD^2$ kgm ²	Weight kg
	Kw	Hp	Current in 400V A	Speed r/min	Eff %	Power Factor cos φ	Rated Current Ist/In	Rated Torque T _{st} /T _N	Rated Torque T _{max} /T _N		
TM 180 L 4P	30	40	54.66	1467	91	0.85	2.3		7.7		207
TM 200 M 4P	37	50	Technical Data on application								
TM 250 M 4P	75	100	131.78	1478	93	0.87	2.3		7.4		418
TM 280 M 4P	110	150	190.64	1486	94	0.87	2.3		7.5		664

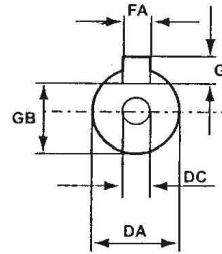
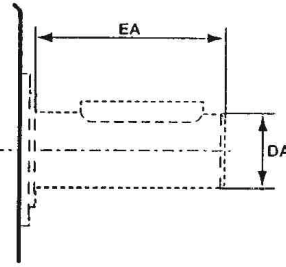
Bearing Sizes

Frame Size	Poles	Drive End	Non - Drive End
180	2-8	6311 C3	6311 C3
200	2-8	6312 C3	6312 C3
225	2-8	6313 C3	6313 C3
250	2-8	6314 C3	6314 C3
280	2	6314 C3	6314 C3
	4-8	6317 C3	6317 C3

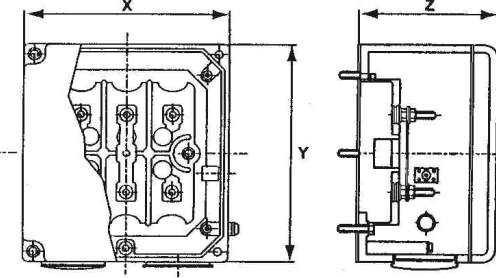
Drive – end Shaft



Non – drive end shaft

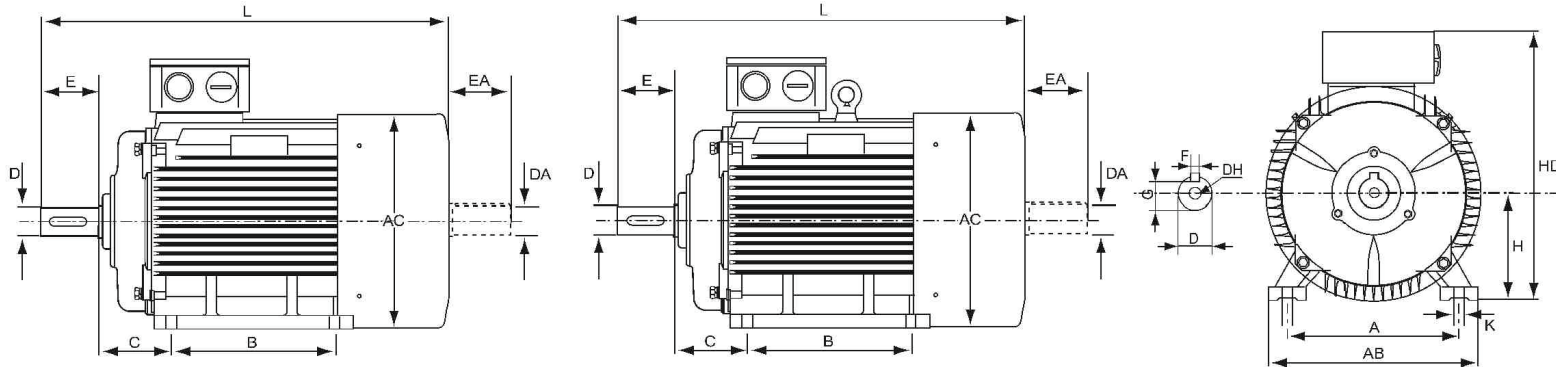


Terminal Box



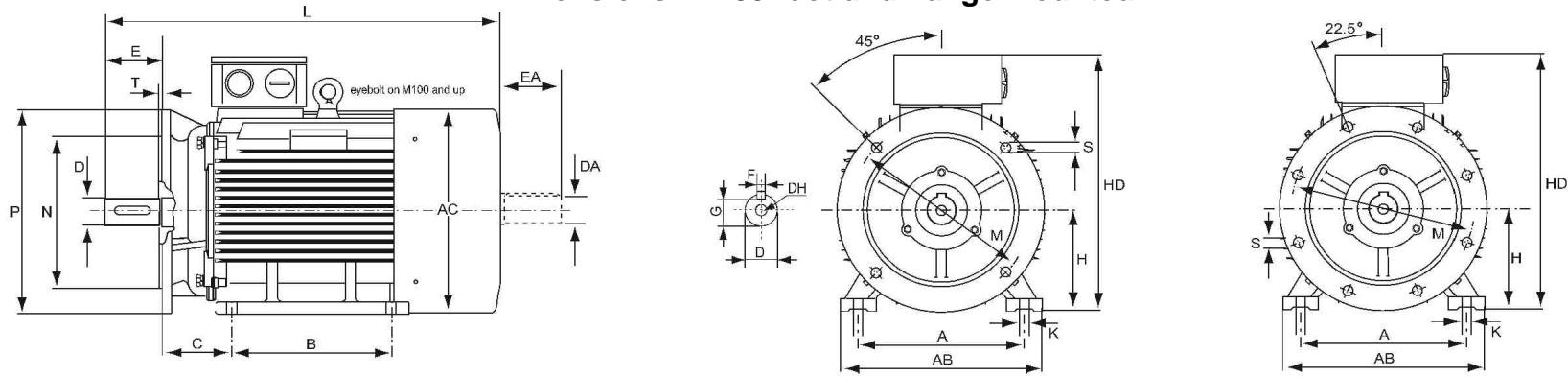
Dimensions in mm																		
Type	Poles	D	E	F	G	DB	GD	DA	EA	FA	GB	DC	GF	Eye Bolt	Outlet Hole	X	Y	Z
TM 180 L	2 / 4 / 6 / 8	48k6	110	14	42.5	M16	9	48k6	110	14	42.5	M16	9	M12	2 x M 40 x 1.5	152	162	75
TM 200 L	2	55m6		16	49	M20	10	55m6		16	49	M20	10	M16	2 x M50 x 1.5	190	210	101
TM 200 L	4 / 6 / 8		60m6	140	18		53	11	55m6	110	16		49	M20	10	M20	2 x M 63 x 1.5	217
TM 250 M	2	65m6	18		58	11	55m6					110						
TM 250 M	4 / 6 / 8	65m6	140	18	58	M20	11	55m6	110	16	49	M20	10	M20	2 x M 63 x 1.5	217	248	124
TM 280 M	2	65m6		18	58		11	55m6	110	16	49		10					
TM 280 M	4 / 6 / 8	75m6	20	67.5	M20	12	60m6	140	18	53	M20	11	M20	2 x M 63 x 1.5	217	248	124	

Dimensions IMB3 foot mounted



Type	Poles	A	AB	AC	B	C	D	DA	E	EA	H	HD	K	L
TM 180 L	2 / 4 / 6 / 8	279	355	380	279	121	48k6	48k6	110	110	180	455	15	740
TM 200 L	2	318	395	420	305	133	55m6	48k6			200	505	19	770
TM 200 L	4 / 6 / 8	406	490	510	349	168	60m6	55m6	140	140	250	615	24	910
TM 250 M	2						65m6	55m6			280	68		1035
TM 250 M	4 / 6 / 8	457	550	580	419	190	65m6	55m6	140	140	280	68	24	1035
TM 280 M	2						75m6	60m6			280	68		1035
TM 280 M	4 / 6 / 8	457	550	580	419	190	75m6	60m6	140	140	280	68	24	1035

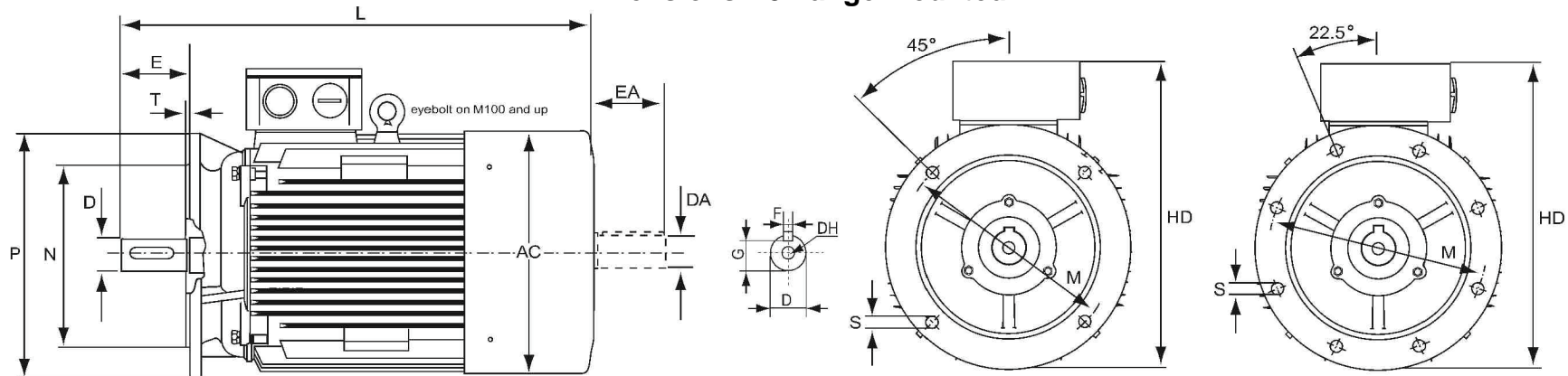
Dimensions IMB35 foot and flange mounted



Dimensions in mm

Type	Poles	A	AB	AC	B	C	D	DA	E	EA	H	HD	K	L	M	N	P	S	T
TM 180 L	2 / 4 / 6 / 8	279	355	380	279	121	48k6	48k6	110	110	180	455	15	740	300	250j6	350	4 Ø19	5
TM 200 L	2	318	395	420	305	133	55m6	55m6			200	505	19	770	350	300h6	400		
TM 200 L	4 / 6 / 8								406	490	510	349	168	60m6	140	140	250	615	
TM 250 M	2	457	550	580	419	190	65m6	55m6	280	680	1035	1035							
TM 250 M	4 / 6 / 8						65m6	55m6	60m6	75m6	60m6	110	140	280	680	1035	1035		
TM 280 M	2	457	550	580	419	190	65m6	55m6	110	140	280	680	1035	1035	500	450h6	550	8 Ø19	
TM 280 M	4 / 6 / 8						65m6	55m6	60m6	75m6	60m6	110	140	280					680

Dimensions B5 flange mounted



Dimensions in mm

Type	Poles	AC	D	DA	E	EA	HD	L	M	N	P	S	T	Flange
TM 180 L	2 / 4 / 6 / 8	380	48k6	48k6	110	110	455	740	300	250j6	350	4 Ø19	5	FF 300
TM 200 L	2	420	55m6	48k6			505	770	350	300h6	400			FF 350
TM 200 L	4 / 6 / 8				510	60m6	55m6	140	140	645	910	500		450h6
TM 250 M	2	580	65m6	55m6	685	1035	1035							
TM 250 M	4 / 6 / 8		65m6	55m6	60m6	110	140	685	1035	1035				
TM 280 M	2	580	65m6	55m6	110	140	685	1035	1035					
TM 280 M	4 / 6 / 8		75m6	60m6	110	140	685	1035	1035					